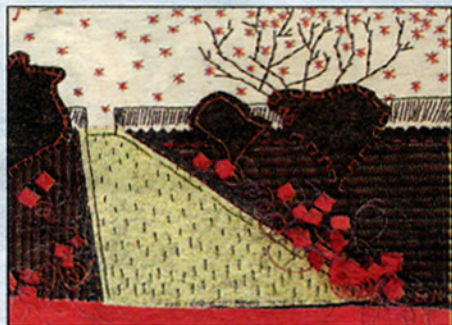


# OPEN GALLERY CLARA IACCARINO

## CONTEMPORARY FABRIC COMPOSITIONS

Loene Furler's work is a fusion of the abstract and figurative. She has a code of symbols and images, boxes and block colours and explores the role of women in art history. But it is the back rooms of Harrison Galleries that provide the most interest. Sarah Nolan's fabric compositions (*Lawn*, pictured) are a homage to her favourite contemporary masters, from Damien Hirst to Jeffrey Smart. Words such as "sweet" and "emotional" punctuate the patchworks, adding



a slogan-like thrust. Nolan has also created a series of patchwork gardens from her mother's pictures of English gardens. The hand-sewn works are colourful and quaint. *Harrison Galleries, 294 Glenmore Road, Paddington, 9380 7100. Tue-Fri, 10am-6pm; Sat, 10am-5pm. Until March 8.*

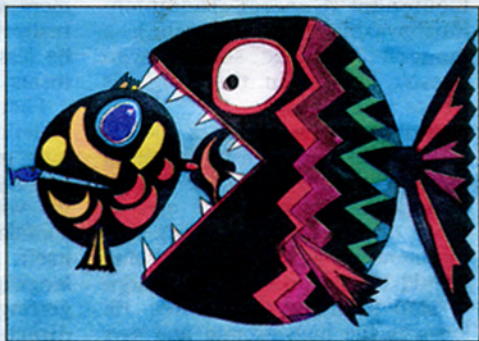
## A MOMENT IN TIME

Sarina Reisinger is a late bloomer in the artistic stakes but her photographs reflect an obvious flair for detail, storytelling and portraiture. A grandmother of nine, Reisinger has a thirst for uncovering the characters behind the tourist-brochure veneer and her images capture the pulse of the locations she visits. More than simple travel snaps, her work is street documentary and she captures the "real people" of St Petersburg, Macau, Berlin and Japan. *Blender Gallery, 16 Elizabeth Street, Paddington, 9380 7080. Tue-Sat, 10am-6pm. Until March 14.*

## LULIE THE ICEBERG FROM PAGE TO STAGE

Kim Carpenter and his Theatre of Image have a reputation for creating magical children's theatre. This exhibition shows the visual storyboarding for a new production, *Lulie the Iceberg - the Soul of Ice*, the tale of a young iceberg that embarks on a solo ocean journey. Some of Carpenter's images (pictured) are brilliantly childlike, with a

Reg Mombassa-like vitality, while others, including dolphins, seals and penguins, are just plain sweet. *Japan Foundation Gallery, Level 1, Chifley Plaza, 2 Chifley Square, 8239 0055. Mon-Fri, 11am-5.30pm. Until March 16.*



## LIVE ART SHOW

Watch as urban artistes Dyzla and Fani1 create canvases on the spot for you to buy. It's live art in the spray art sense, using anything from aerosol cans to paint and ink. If their body of work is anything to go by, the creations will be bold, joyous and character-based. The pair worked on the outside wall of the Record Store during the week, creating a mural, but today and tomorrow you can sip a beer and boogie to live tunes while you watch them in action. *The Record Store Gallery, 255b Crown Street, Surry Hills, 9380 8223. Mon-Tue, 11am-6pm; Wed, 11am-7pm; Thu, 11am-9pm; Fri, 11am-7pm; Sat-Sun, noon-dusk. Until March 10.*

Send exhibition details to [opengallery@smh.com.au](mailto:opengallery@smh.com.au).